

One of RGM's newest models, the I.S.I.S. 1000B features additional data storage capacity and time and date stamping of events.

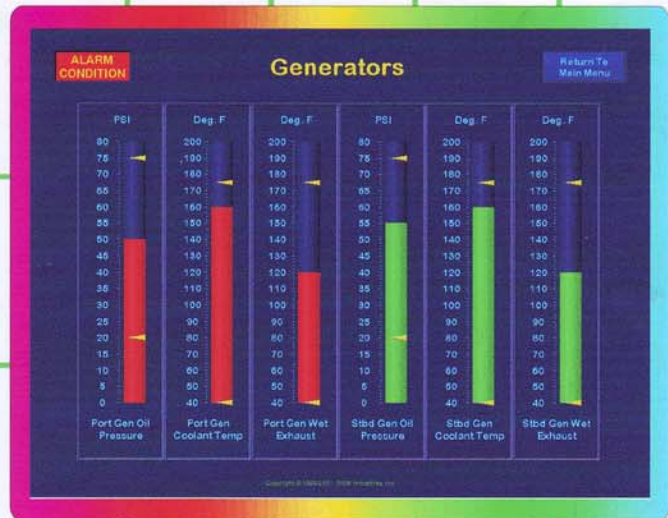


I.S.I.S. 1000B

INTEGRATED SHIPBOARD INFORMATION SYSTEM

The Integrated Shipboard Information System (I.S.I.S.) is the marine industry's original fiber optic monitoring system! The I.S.I.S. uses smart acquisition units to collect, fiber optic technology to transmit, and graphics monitors to display shipboard operating data. Aboard the finer yachts, I.S.I.S. units have become the preferred alternative to cumbersome electro-mechanical gauges and other monitoring systems.

The new I.S.I.S. Model 1000B offers additional features that include greater data storage capacity, time and date stamping of events and the ability to upload or download program changes via a built-in Zip disk drive or modem. The I.S.I.S. also lets the captain view yacht management information while continuously monitoring realtime data.



RGM INDUSTRIES INC.

3342 LILLIAN BLVD., TITUSVILLE, FL 32780 (321) 269-0063 FAX (321) 269-4729
 WEB SITE: WWW.RGM-ISIS.COM

I.S.I.S. 1000B Hardware

Hardware for the I.S.I.S. 1000B includes 2 **Data Interconnect Units (DIU)** designed to collect digital and analog sensor inputs. Each DIU can monitor 16 inputs and is paired with a patented **Data Acquisition Unit (DAU)**. The DAU is designed to convert sensor inputs from electrical currents to modulated light signals that are transmitted via fiber optic cabling to the **Data Processing Unit (DPU)**.

The DPU contains a state-of-the-art processor that uses Windows™ to run the I.S.I.S. yacht monitoring program. A greater capacity storage system contains all historical data obtained from I.S.I.S. monitoring, including the time and date stamping of an event. The DPU is powered using a state-of-the-art 115Vac or optional 230Vac switching power supply.

A standard SVGA cable connects the DPU to the primary **Data Display Unit (DDU)** at the pilot house, with a resolution of **1024x768 @ 60 Hz.** refresh rate. The DDU can be a standard computer monitor, plasma display or a high intensity daylight viewable LCD flat screen with touchscreen capability. Concurrently, data can be distributed to all TV sets on board your vessel using a SVGA to NTSC converter.

ISIS 1000B Technical Specifications

ELECTRICAL: Operating voltage & power consumption

115 vac (optional 24Vdc, 32Vdc)	
Data Display Unit (DDU)	2.0 amps @ 115Vac
Data Processing Unit (DPU)	1.5 amps @ 115Vac
Data Acquisition Unit (DAU)	0.2 amps @ 12-24 Vdc

MATERIALS, ENCLOSURES:

DDU	Molded ABS plastic
DAU	Aluminum
DIU	Aluminum
DPU	Aluminum

MECHANICAL:

	<u>DEPTH</u>	<u>WIDTH</u>	<u>HEIGHT</u>
DDU	15" (380mm)	15" (380mm)	16" (410mm)
DPU	13" (330mm)	11" (280mm)	6.5" (170mm)
DAU	9.5" (240mm)	9.0" (230mm)	2.75" (70mm)
DIU	14" (360mm)	3.0" (76mm)	1.25" (32mm)

ENVIRONMENTAL:

Storage Temp	-5° to +131° F (-20.5° to +55° C)
Operating Temp	+32° to +90° F (0° to +32.2° C)
Humidity	0% to 90% Non-condensing

STANDARD HARDWARE CONFIGURATION:

<u>Item</u>	<u>Quantity</u>
Data Display Unit (DDU)	1
Data Processing Unit (DPU)	1
with power supply	1
Data Acquisition Unit (DAU)	2
Data Interconnect Unit (DIU)	2
Interconnect cabling (DIU to DAU)	2 @ 3 ft.
Fiber optic cables (DAU to DDU)	350 ft.

OPTIONS:

- Additional DIU/DAUs (8 additional units can be added for a total of 160 monitoring inputs)
- Customized sensors, senders and limit switches
- Printer for hard copy reports
- Customized programs
- Additional 160 channels using Fiber Optic Mux.

EXAMPLES OF MONITORED FUNCTIONS:

Analog:

- Engine oil pressure, RPM, vacuum boost
- Temperatures (engine water, air intake, etc.)
- Battery voltage, bilge levels, fuel levels etc.

Digital:

- FM200 system discharge; Smoke detector
- Hatch switches; Over-temperature switches
- Bilge level alarms; Timed pump running; etc.