

ADVANCED FIBER OPTIC TECHNOLOGY

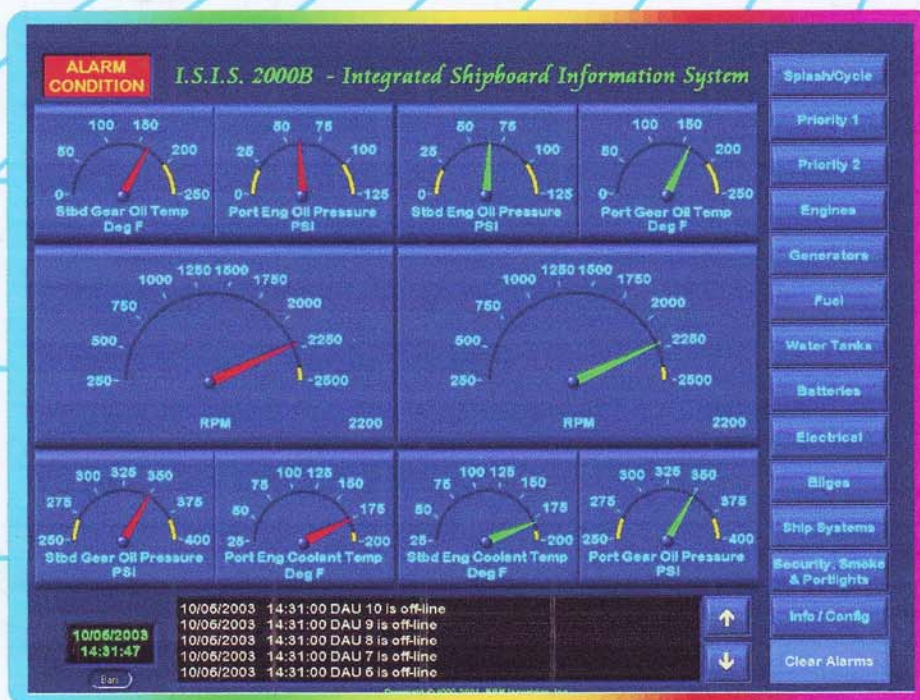
COMPUTER AUTOMATED MONITORING

EXPANDABLE MODULAR DESIGN

PRIORITY ALARMS



I.S.I.S. 2000B



INTEGRATED SHIPBOARD INFORMATION SYSTEM

The **INTEGRATED SHIPBOARD INFORMATION SYSTEM** (I.S.I.S) is the marine industry's original fiber optic monitoring system! The I.S.I.S. uses smart acquisition units to collect, fiber optic technology to transmit, and graphics monitors to display shipboard operating data. Introduced in 1989, I.S.I.S. units have become the preferred alternative to cumbersome mechanical gauges and other monitoring systems.

The new I.S.I.S. Model 2000B offers additional features that enable the system to be used as a yacht management tool and a GPS navigational charting

system. Pentium™ power allows the ISIS 2000B to be installed with any existing yacht management software, or by using various databases, you can configure your own management program. Also, using pre-installed charting program, the I.S.I.S. 2000B can allow you see your vessel's position on the latest NOAA, CHS or Maptech charts.

Most importantly, the I.S.I.S. 2000B lets the captain view yacht management information or navigational screens, while continuously monitoring realtime shipboard data.

RGM INDUSTRIES INC.

3342 LILLIAN BLVD., TITUSVILLE, FL 32780 (321) 269-4720 FAX (321) 269-4729
WEB SITE: WWW.RGM-ISIS.COM

I.S.I.S. 2000B Hardware

Hardware for the I.S.I.S. 2000B includes 2 **Data Interconnect Units (DIU)** designed to collect digital and analog sensor inputs. Each DIU can monitor 16 inputs and is paired with a **Data Acquisition Unit (DAU)**. The DAU is designed to convert sensor inputs from electrical currents to modulated light signals that are transmitted via fiber optic cabling to the **Data Processing Unit (DPU)**.

The DPU contains a state-of-the-art processor that uses Windows™ to run I.S.I.S. monitoring and selected navigational charting programs simultaneously. A large storage system contains all navigational charts and I.S.I.S. historical data. Standard I.S.I.S. run timers included with our integrated vessel maintenance system, makes routine maintenance scheduling and reminders a snap. The DPU is powered by a 115/230Vac switching power supply fed from an UPS unit.

A standard VGA cable connects the DPU to the primary **Data Display Unit (DDU)** in the pilot house with a resolution of **1024x768 @ 60Hz**. The DDU can be a standard pilothouse computer monitor, plasma display or a high intensity daylight viewable flat screen with touchscreen capability. Concurrently, data can also be distributed to all TV sets on board your vessel using a XGA to NTSC converter and is internet,sat.com compatible.

ISIS 2000B Technical Specifications

ELECTRICAL: Operating voltage & power consumption

115 vac (optional 24vdc, 32vdc)	
Data Display Unit (DDU)	2.0 amps @ 115vac
Data Processing Unit (DPU)	1.5 amps @ 115vac
Data Acquisition Unit (DAU)	0.2 amps @ 12-24 vdc

MATERIALS, ENCLOSURES:

DDU	Molded ABS plastic
DAU	Aluminum
DIU	Aluminum
DPU	Aluminum

MECHANICAL:

	DEPTH	WIDTH	HEIGHT
DDU	15" (380mm)	15" (380mm)	16" (410mm)
DPU	13" (330mm)	11" (280mm)	6.5" (170mm)
DAU	9.5" (240mm)	9.0" (230mm)	2.75" (70mm)
DIU	14" (360mm)	3.0" (76mm)	1.25" (32mm)

ENVIRONMENTAL:

Storage Temp	-5° to +131° F (-20.5° to +55° C)
Operating Temp	+32° to +90° F (0° to +32.2° C)
Humidity	0% to 90% Non-condensing

STANDARD HARDWARE CONFIGURATION:

Item	Quantity
Data Display Unit (DDU)	1
Data Processing Unit (DPU) with power supply	1
Data Acquisition Unit (DAU)	2
Data Interconnect Unit (DIU)	2
Interconnect cabling (DIU to DAU)	2 @ 3 ft.
Fiber optic cables (DAU to DDU)	350 ft.

OPTIONS:

- Additional DIU/DAUs (8 additional units can be added for a total of 160 monitoring inputs)
- Customized sensors, senders and limit switches
- Captain's log, keyboard entry
- Customized programs
- Printer for hard copy reports
- Remote Access Capability
- Additional 160 channels using Fiber Optic Mux

EXAMPLES OF MONITORED FUNCTIONS:

Analog:

- Engine oil pressure, RPM, vacuum boost
- Temperatures (engine water, air intake, etc.)
- Battery voltage, bilge levels, fuel levels etc.

Digital:

- FM200 system discharge; Smoke detector
- Hatch switches; Over-temperature switches
- Bilge level alarms; Timed pump running; etc.