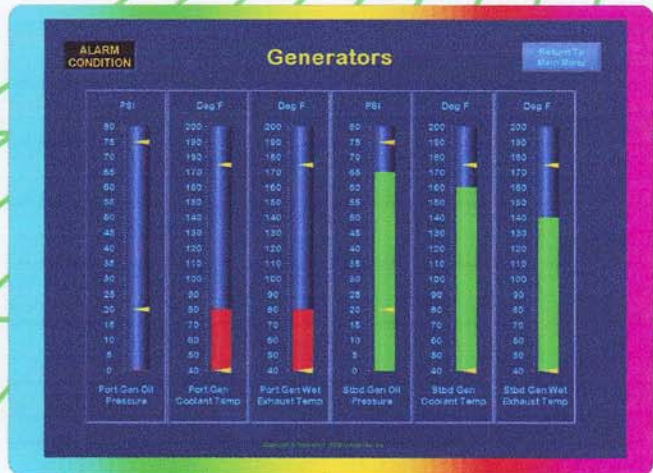
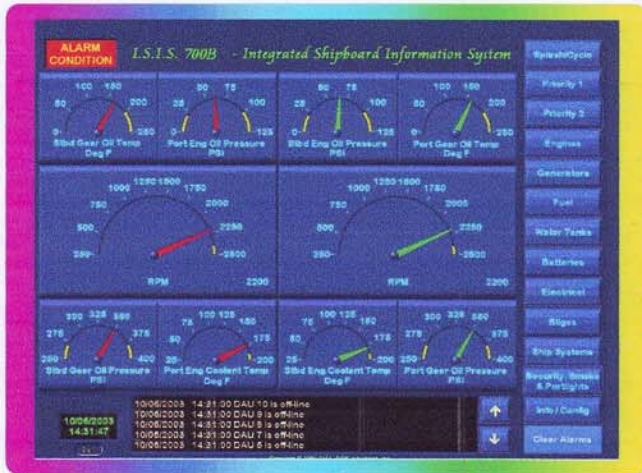


RGM's newest model features a Shipboard Maintenance Program and additional data storage capabilities!



I.S.I.S. 700B

INTEGRATED SHIPBOARD INFORMATION SYSTEM

The Model 700B is the most advanced Integrated Shipboard Information System RGM Industries Inc. has ever offered. Our commitment to bring the best proven technology to the marine market began over 20 years ago with the Model 50. The Model 50 introduced the first fiber optic network designed specifically for marine applications to collect, analyze and process data in real time, all the time. The reliability of ISIS is as legendary as our commitment to our customers, in fact the original installations are still performing and factory support remains available.

The Model 700B is based on our proven modular design that uses smart acquisition units to collect, process and display shipboard information over a robust high speed fiber optic network. The 700B utilizes industry standard USB ports that offer plug-n-play support for remote wireless mouse, upload/download capabilities, remote monitoring, TV/video interfaces and internet connectivity. Historical, Alarm and Maintenance log storage capacity is bigger than ever and read/write speeds are blazingly fast.

The 700B runs the most powerful software to date. The software allows the choice of bar graph or gauge displays. Alarm limits and maintenance notices are user customizable. Seamless interfaces to the major electronic engine data busses are standard. Standard features include a built-in user configurable Maintenance program that keeps track of routine maintenance items such as belts, hoses, filters, lubrication intervals and oil changes. Historical logs that record ISIS transactions to provide trend information, allows for decrease insurance costs and increase resale value. Alarm logs provide immediate notification of monitored functions that fail to meet or exceed user configurable levels.

The Model 700B is powerful, full featured, password protected and very user friendly, in fact most operator commands are executed with a four button Control Panel. The Control Panel eliminates the need for high level computer skills and training and allows the operator to get maximum usage with minimal effort.

RGM INDUSTRIES INC.

3342 LILLIAN BLVD., TITUSVILLE, FL 32780 (321) 269-4720 FAX (321) 269-4729
 WEB SITE: WWW.RGM-ISIS.COM

I.S.I.S. 700B Hardware

Hardware for the I.S.I.S. 700B includes 2 **Data Interconnect Units (DIU)** designed to collect digital and analog sensor inputs. Each DIU can monitor 16 inputs and is paired with a patented **Data Acquisition Unit (DAU)**. The DAU is designed to convert sensor inputs from electrical currents to modulated light signals that are transmitted via fiber optic cabling to the **Data Processing Unit (DPU)**.

The DPU contains a high-speed processor that is powered using a state-of-the-art 115vac switching power supply with optional 230vac. The new data storage system for the I.S.I.S. 700B is more than twice the size of the Model 700 and also includes an internal floppy disk drive for easier updating and downloading of historical data.

A standard SVGA cable connects the DPU to the primary **Data Display Unit (DDU)** in the pilot house. The DDU is a high-resolution (**1024x768 @ 60Hz**) color monitor that displays sensor information in a variety of user-defined screens. This information is controlled and accessed by entering commands using a four-button Control Panel or mouse. The Control Panel may be installed in any location that allows the operator to view the information on the DDU.

ISIS 700B Technical Specifications

ELECTRICAL: Operating voltage & power consumption

115 vac (optional 24vdc, 32vdc)
 Data Display Unit (DDU) 2.0 amps @ 115vac
 Data Processing Unit (DPU) 1.5 amps @ 115vac
 Data Acquisition Unit (DAU) 0.2 amps @ 12-24vdc

MATERIALS, ENCLOSURES:

DDU Molded ABS plastic
 DDU Aluminum
 DIU Aluminum
 DPU Aluminum

MECHANICAL:

	DEPTH	WIDTH	HEIGHT
DDU	15" (380mm)	15" (380mm)	16" (410mm)
DPU	12" (305mm)	11" (280mm)	6.5" (165mm)
DAU	9.5" (240mm)	9.0" (230mm)	2.75" (70mm)
DIU	14" (360mm)	3.0" (76mm)	1.25" (32mm)

ENVIRONMENTAL:

Storage Temp -5° to +131° F
 (-20.5° to +55° C)
 Operating Temp +32° to +90° F
 (0° to +32.2° C)
 Humidity 0% to 90%
 Non-condensing

STANDARD HARDWARE CONFIGURATION:

Item	Quantity
Data Display Unit (DDU)	1
Data Processing Unit (DPU) with power supply	1
Data Acquisition Unit (DAU)	2
Data Interconnect Unit (DIU)	2
Interconnect cabling (DIU to DAU)	2 @ 3 ft.
Fiber optic cables (DAU to DPU)	250 ft.

OPTIONS:

- Additional DIU/DAUs (3 additional units can be added for a total of 80 monitoring inputs)
- Customized sensors, senders and limit switches
- Printer for hard copy reports
- Customized programs
- LCD Flat Screen Display

EXAMPLES OF MONITORED FUNCTIONS:

Analog:

- Engine oil pressure, RPM, vacuum boost
- Temperatures (engine water, air intake, etc.)
- Battery voltage, bilge levels, fuel levels, etc.

Digital:

- FM200 system discharge; Smoke detector
- Hatch switches; Over-temperature switches
- Bilge Level alarms, Timed pump running, etc.